

B

- Matériel nécessaire : colle en tube, ciseaux, papier épais.
- Temps de réalisation : 45 minutes à une heure.

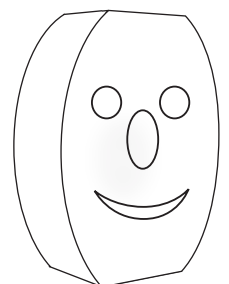
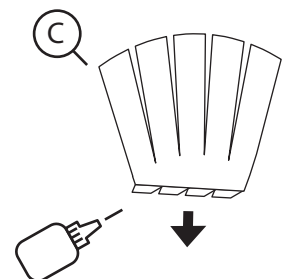
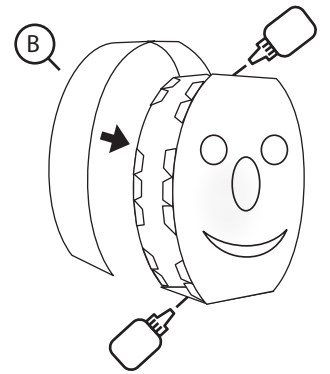
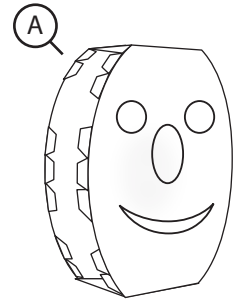
LÉGENDE

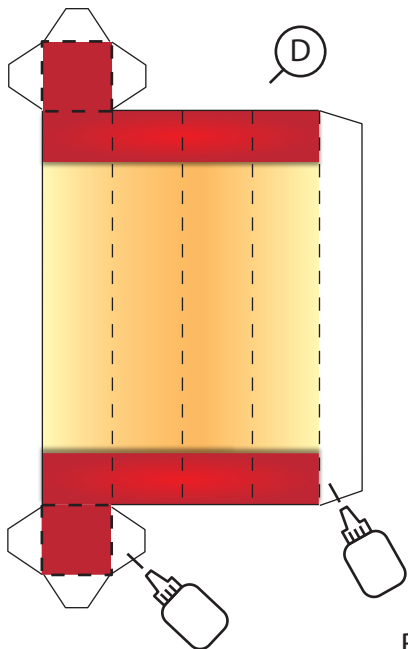


Parties à coller

Parties à couper

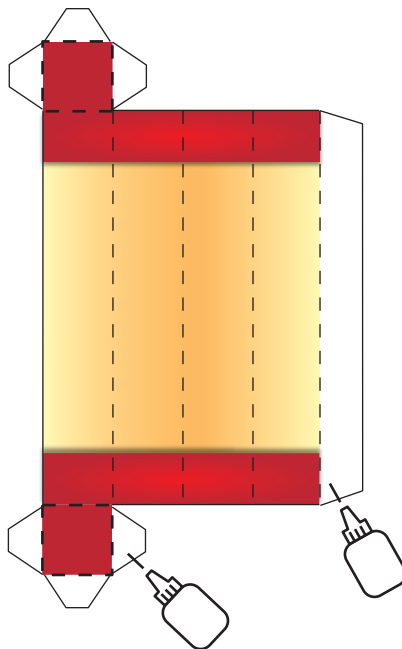
Parties à plier





D

E



BRAS

LÉGENDE



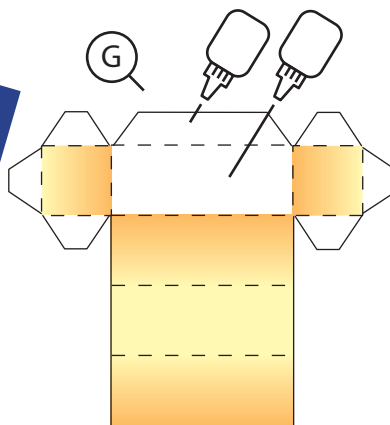
Parties à coller

Parties à couper

Parties à plier

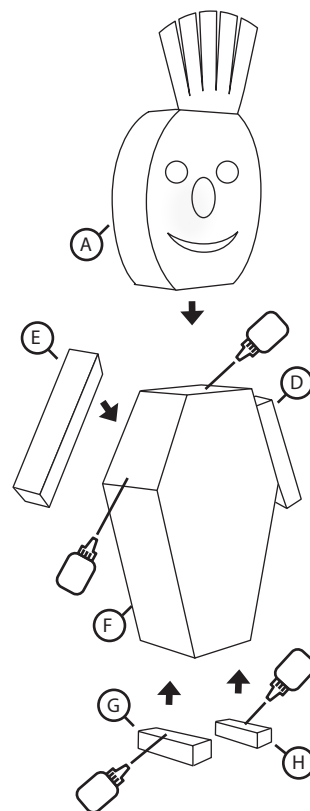


F



G

JAMBE DROITE



A

E

D

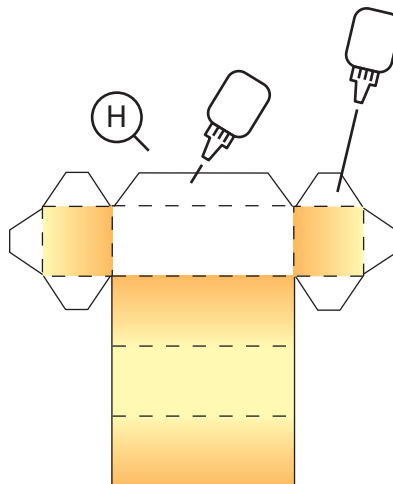
F

G

H



CORPS



H

JAMBE GAUCHE

