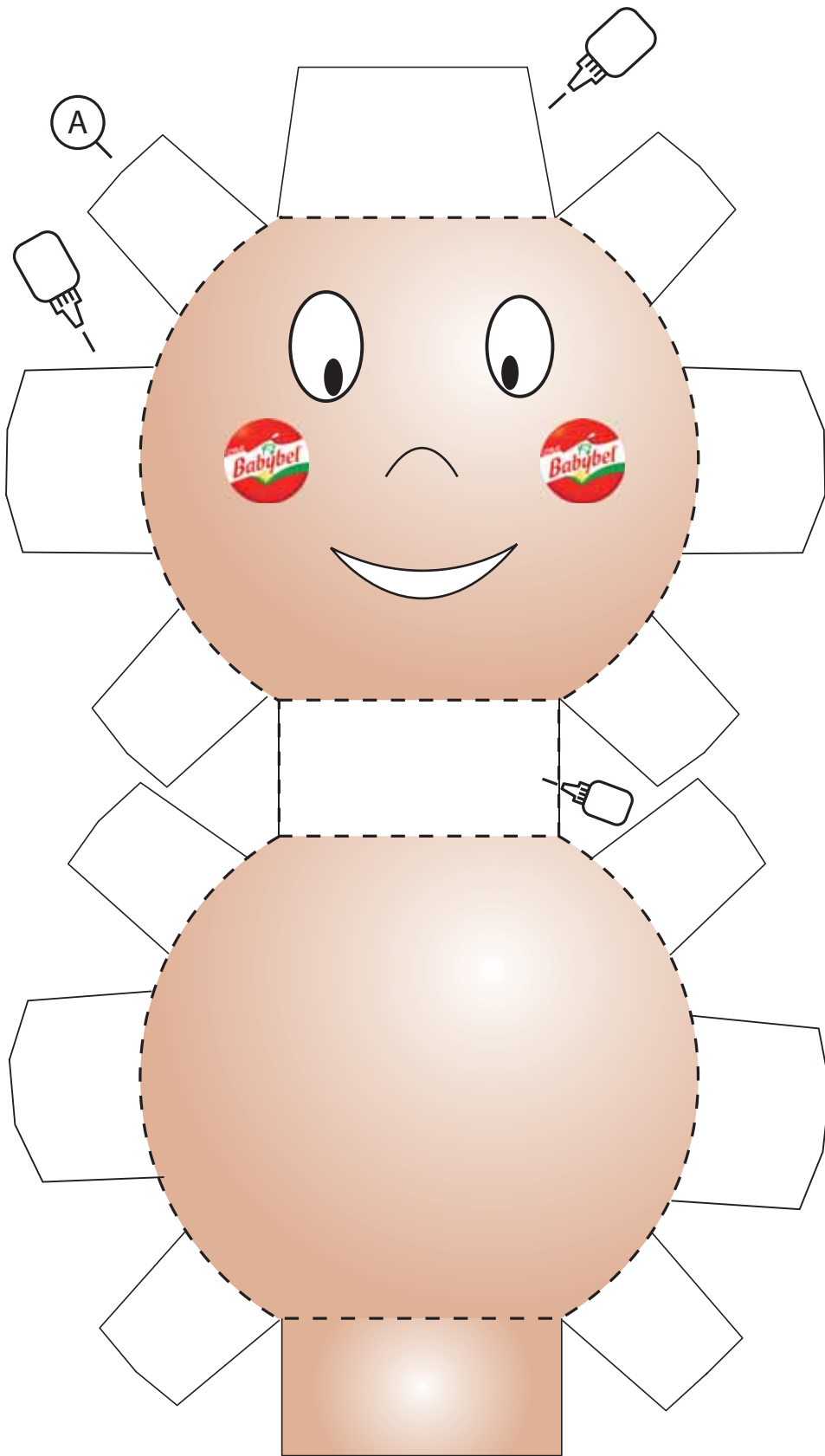


# TÊTE






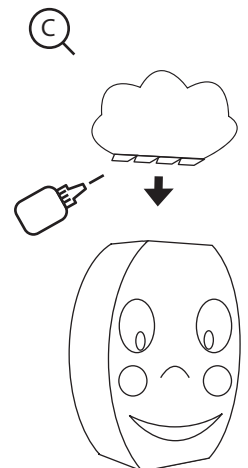
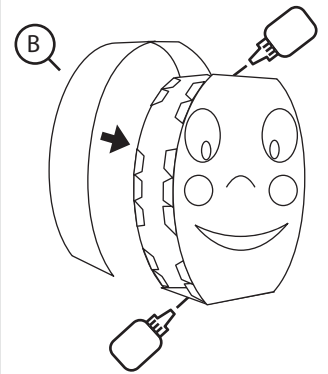
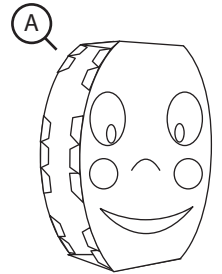
B



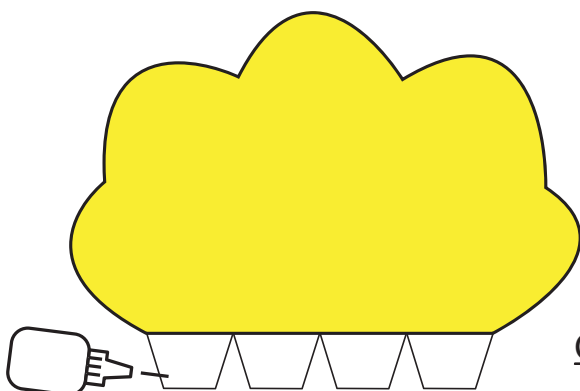
- Matériel nécessaire : colle en tube, ciseaux, papier épais.
- Temps de réalisation : 45 minutes à une heure.

### LÉGENDE

	Parties à coller		Parties à plier
			Parties à couper

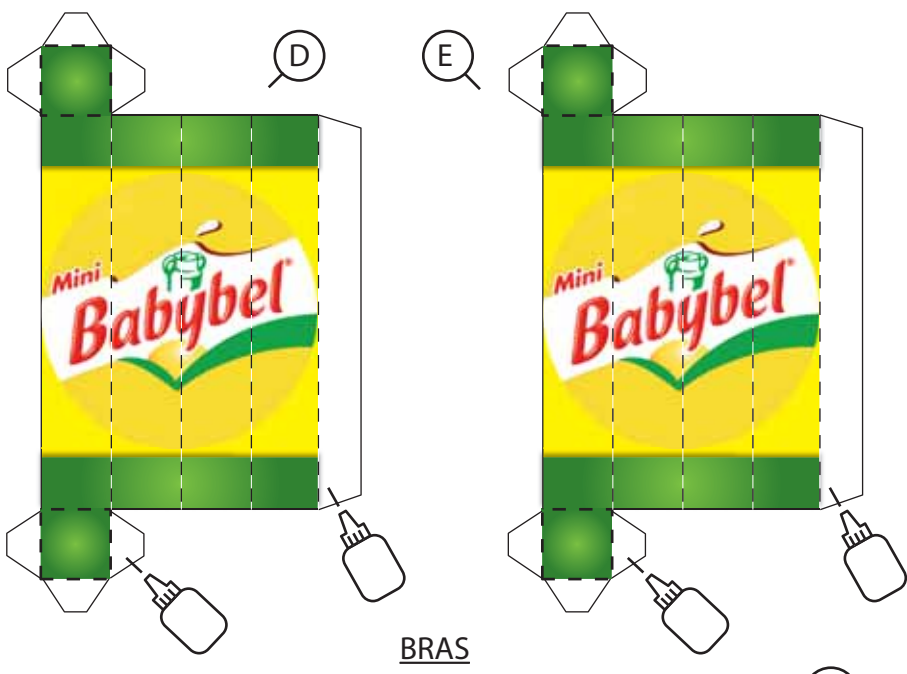


C

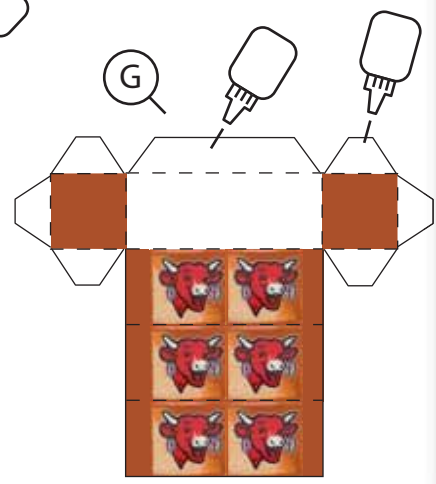


CHEVEUX

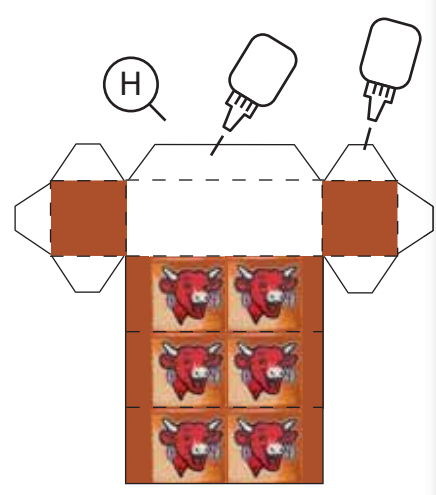
LÉGENDE	
	Parties à couper
	Parties à coller
	Parties à plier



BRAS



JAMBE DROITE



JAMBE GAUCHE



CORPS

