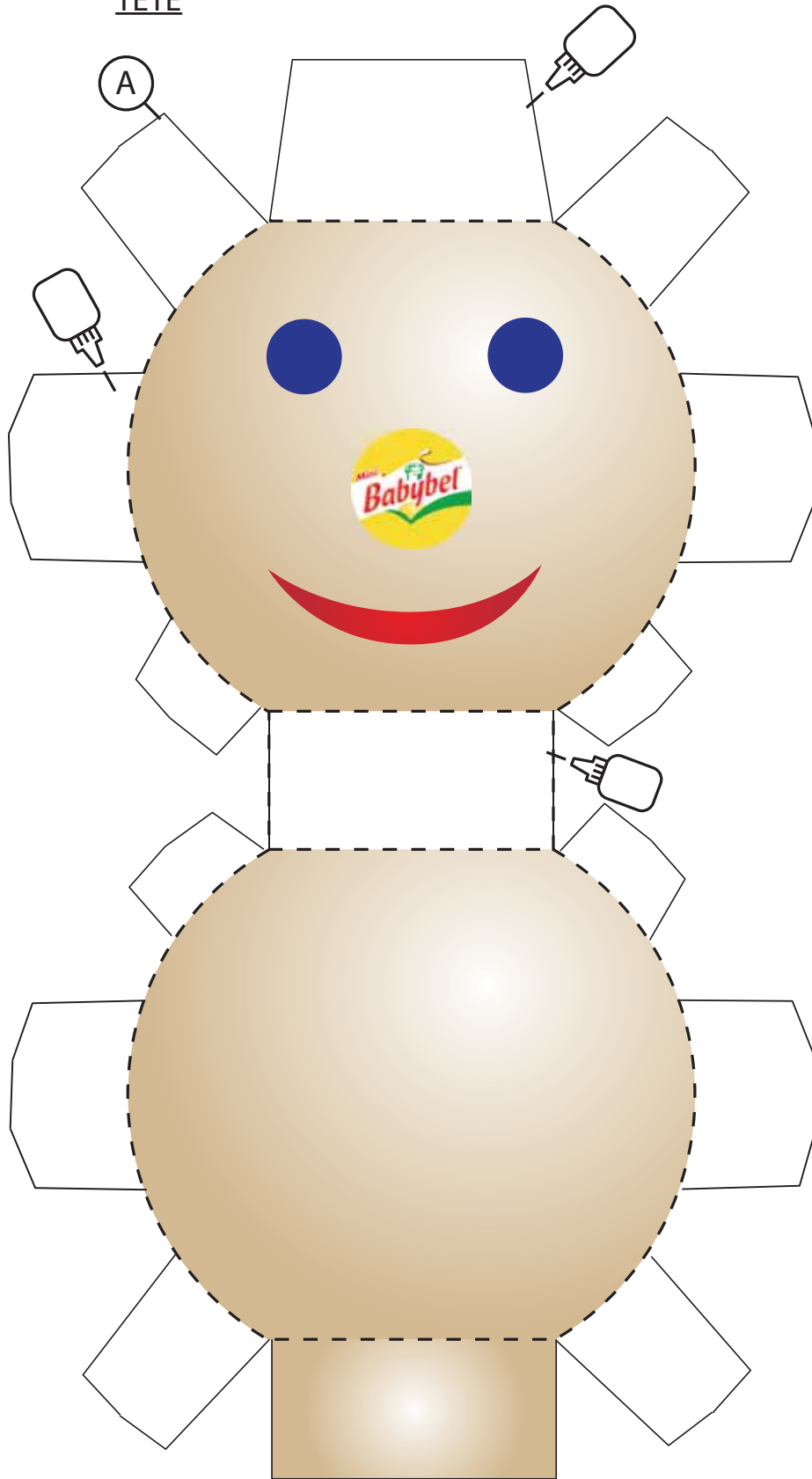


TÊTE



CHEVEUX



B



• Matériel nécessaire : colle en tube, ciseaux, papier épais.

• Temps de réalisation : 45 minutes à une heure.

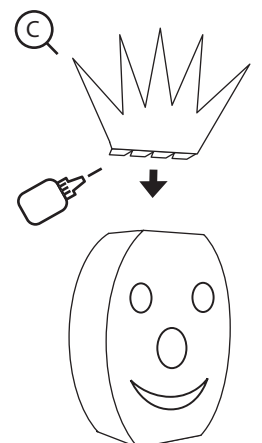
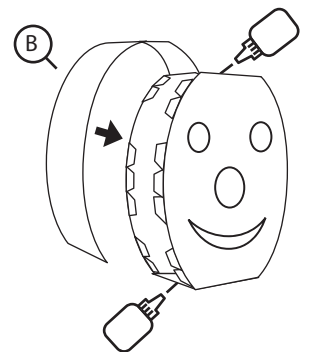
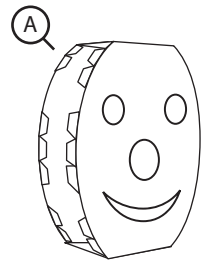
LÉGENDE



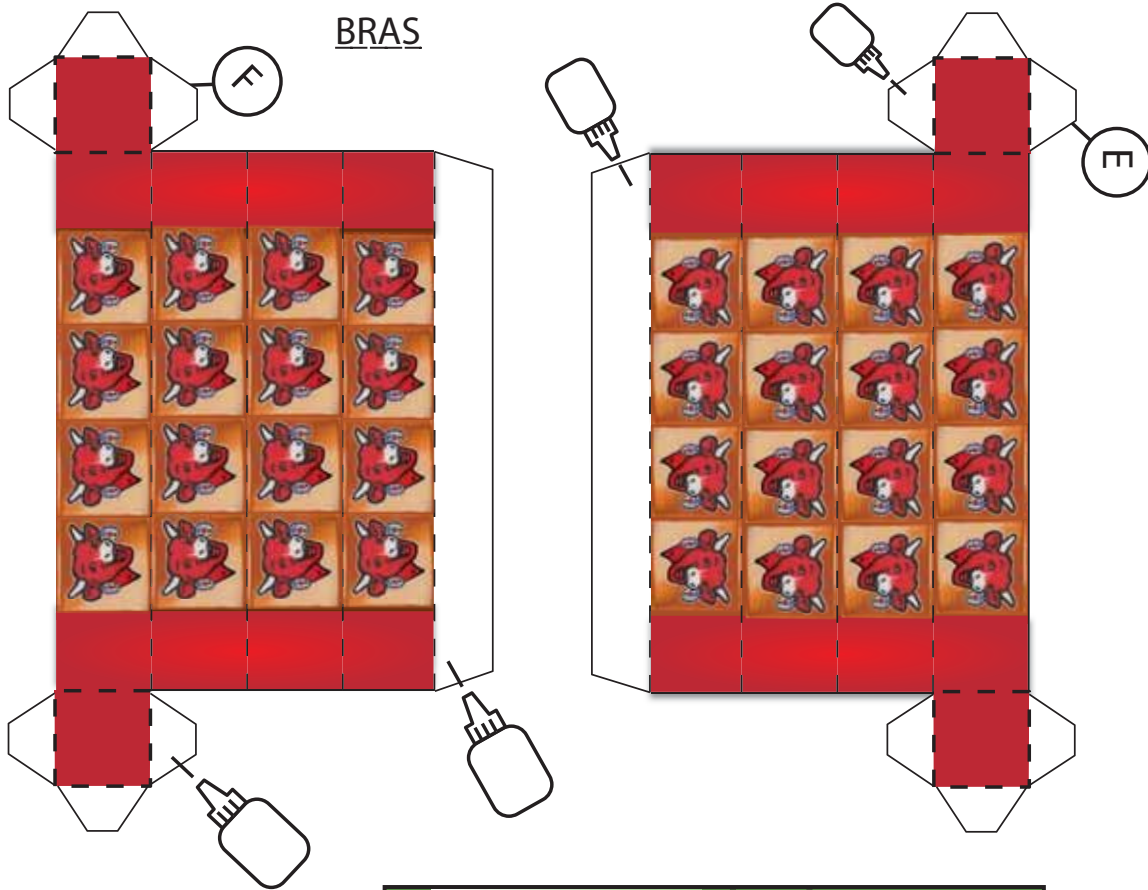
Parties à coller

Parties à couper

Parties à plier



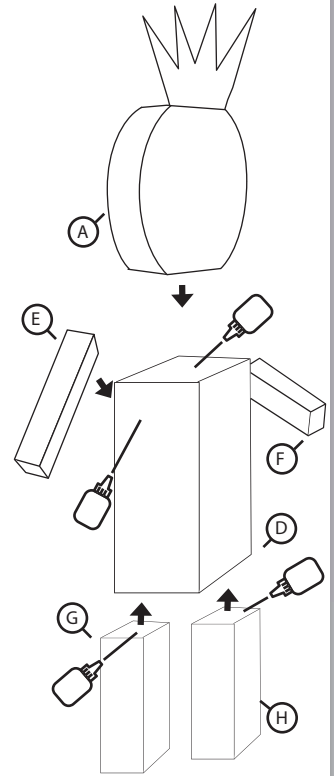
BRAS



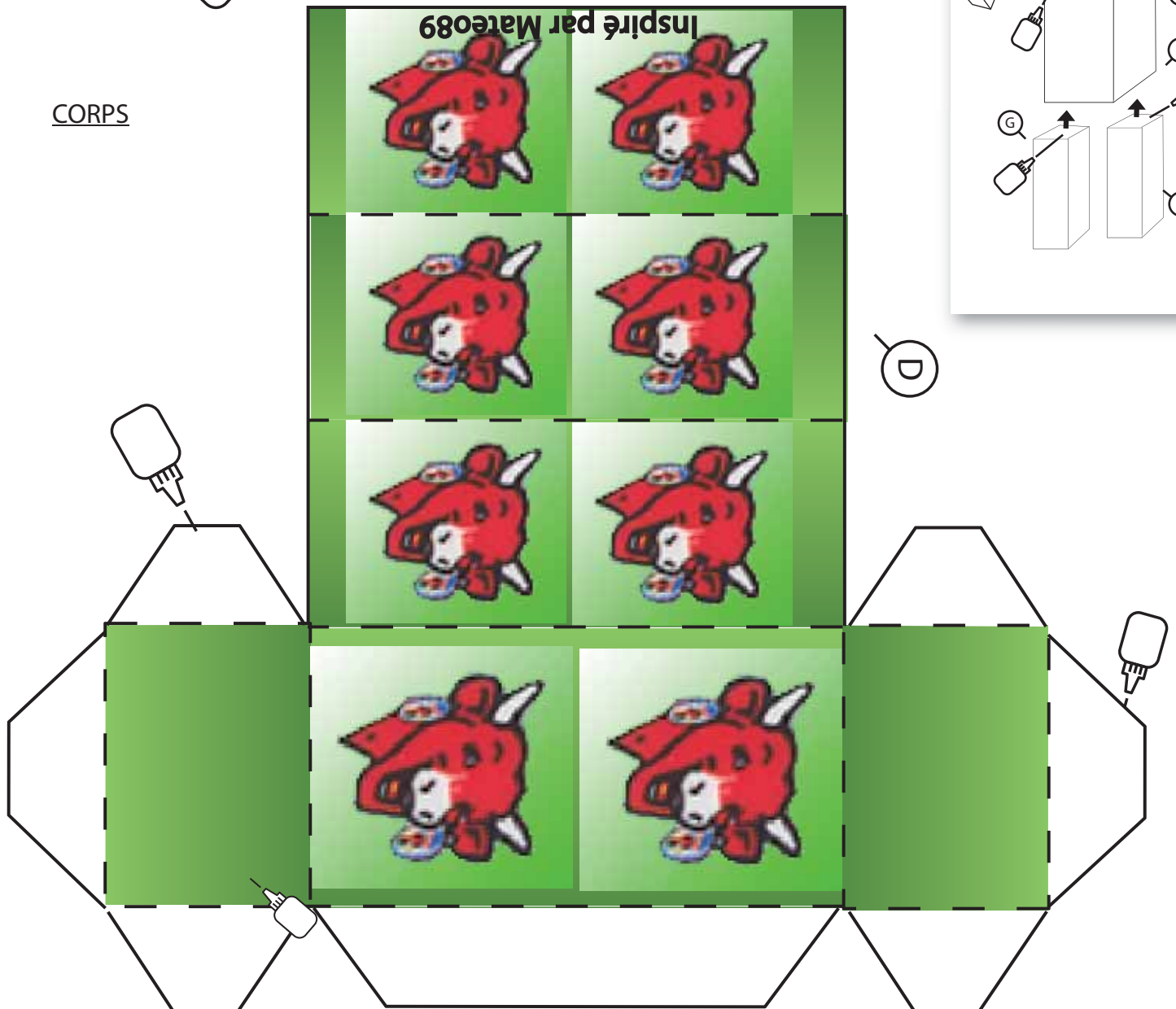
LÉGENDE

 Parties à coller

Parties à couper
Parties à plier

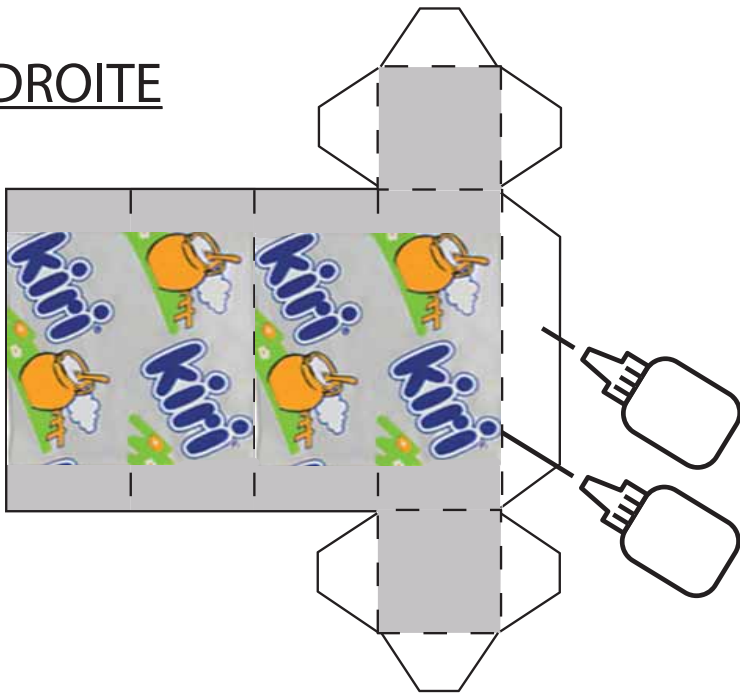


CORPS



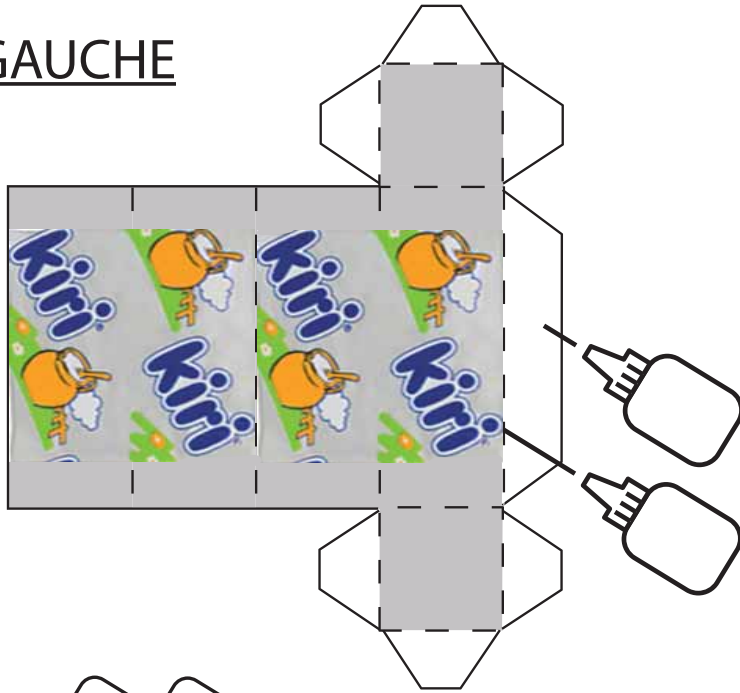
JAMBE DROITE

G



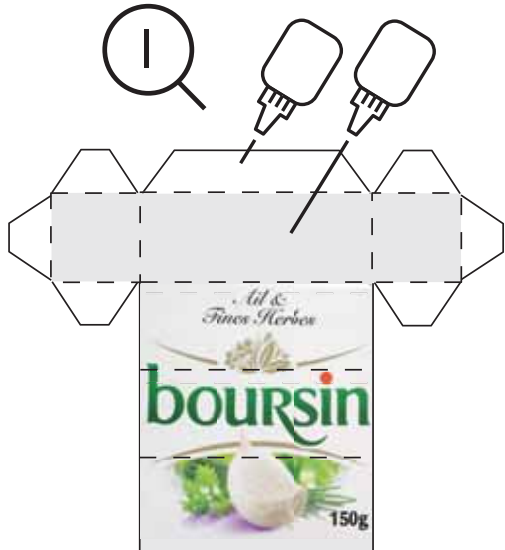
JAMBE GAUCHE

H

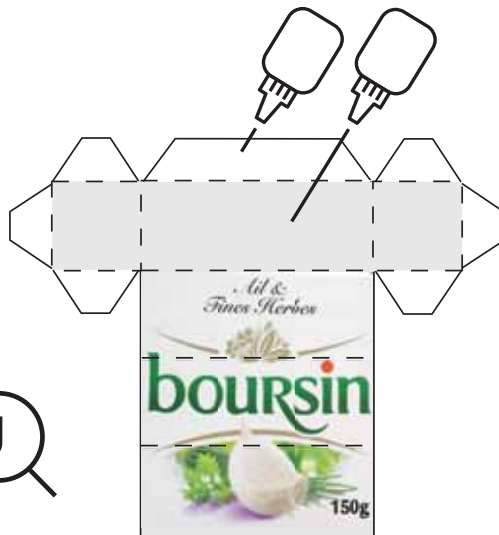


LES PIEDS




I



J



LÉGENDE

	Parties à coller		Parties à plier
			Parties à couper

